

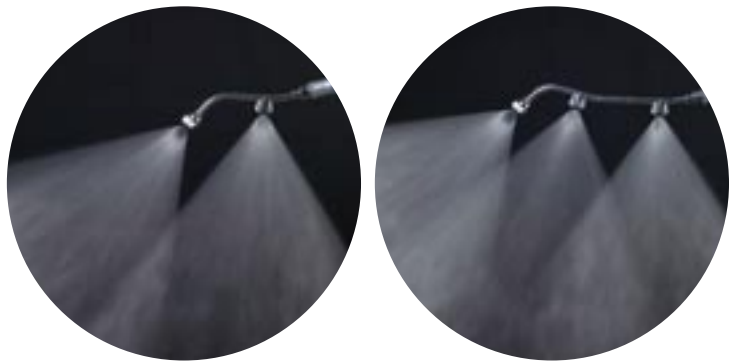


- ① CERAMIC Nozzle, 3 Nozzles lengthwise
- ② MUSCAT Boom Sprayer #-3S
- ③ CERAMIC Boom Sprayer for Tea Fields (Dense Spray), 5 Nozzles
- ④ CERAMIC SUZURAN Boom Sprayer, 5 Nozzles

CERAMIC Nozzle

<Drift-reducing>

Features Produces a 80° flat fan spraying pattern - ideal for fruits and vegetables on bushes.
 Minimal drift and very uniform distribution keeps impact to adjacent areas to a minimum.
 Nozzle head is made of ceramic, which makes it very durable and anti-abrasive.



Average Drop Size (µm)	120(1.5MPa)
Pressure Range (MPa)	1.0-1.5
Maximum Spray Reach	approx. 5m

Item	#-P-1 Nozzle	#-2 Nozzles. Lengthwise	#-3 Nozzles. Lengthwise
Flow Rate (1.5MPa)	2.1 L/min	4.2 L/min	6.3 L/min
Nozzle	CV2180S	CV2180S	CV2180S
Coverage	approx. 40cm	approx. 80cm	approx. 100cm
Maximum Spray Reach	approx. 5m	approx. 5m	approx. 5m
Length/Weight	3.7cm, 13 g	17cm, 79 g	27cm, 120 g
Adapter	G1/4	G1/4	G1/4

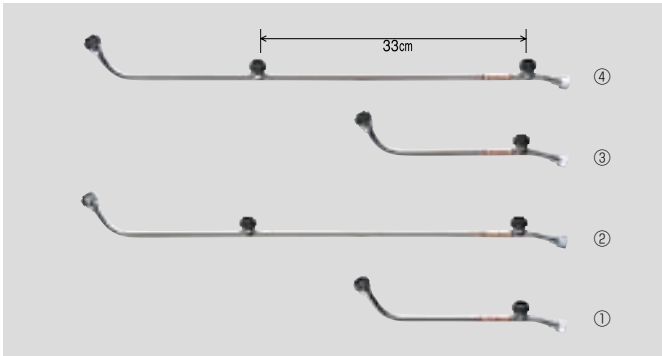
* Coverage as of 30 cm from nozzle head

No.	Code No.	Item	Min. Unit	Use
1	20 16 14	CERAMIC Nozzle, P-1 Nozzle (G1/4)	20	For fruits, vegetables and general use (Item made on demand)
2	20 11 14	CERAMIC Nozzle, 2 Nozzles (Lengthwise) (G1/4)	10	For fruits, vegetables and general use (Item made on demand)
3	20 11 15	CERAMIC Nozzle, 3 Nozzles (Lengthwise) (G1/4)	10	For fruits, vegetables and general use (Item made on demand)

MUSCAT Boom Sprayer

<Drift-reducing>

Nozzle	CV1080S	CV2180S
Average Drop Size (μm)	80(1.5MPa)	120(1.5MPa)
Pressure Range (MPa)	1.0-1.5	1.0-1.5
Maximum Spray Reach	approx. 5m	approx. 5m



Item	#-2S	#-3S	#-2L	#-3L
Flow Rate (1.5MPa)	2.1 L/min	3.2 L/min	4.2 L/min	6.3 L/min
Nozzle	CV1080S	CV1080S	CV2180S	CV2180S
Coverage	approx. 90cm	approx. 120cm	approx. 90cm	approx. 120cm
Maximum Spray Reach	approx. 5m	approx. 5m	approx. 5m	approx. 5m
Length/Weight	26cm, 91 g	59cm, 160 g	26cm, 91 g	59cm, 160 g
Adapter	G1/4	G1/4	G1/4	G1/4

* Coverage as of 30 cm from nozzle head

No.	Code No.	Item	Min. Unit	Use
1	20 20 15	MUSCAT Boom Sprayer #-2S (G1/4)	10	For vines (Item made on demand)
2	20 20 17	MUSCAT Boom Sprayer #-3S (G1/4)	10	For vines (Item made on demand)
3	20 20 16	MUSCAT Boom Sprayer #-2L (G1/4)	10	For vines (Item made on demand)
4	20 20 18	MUSCAT Boom Sprayer #-3L (G1/4)	10	For vines (Item made on demand)

CERAMIC SUZURAN Boom Sprayer, 3-6 Nozzles

<Drift-reducing>

Average Drop Size (μm)	120(1.5MPa)
Pressure Range (MPa)	1.0-1.5
Maximum Spray Reach	approx. 5m

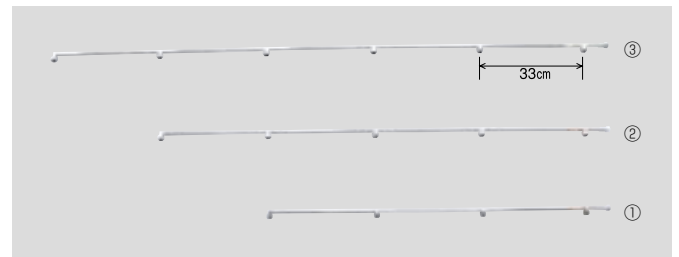
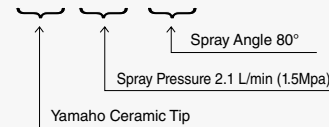


Features

Produces a 80° flat fan spraying pattern. Minimal drift and very uniform distribution keeps impact to adjacent areas to a minimum. Nozzle head is made of ceramic, which makes it very durable and anti-abrasive.

Explanation of Ceramic tip No.

CV 21 80



Item	3 Nozzles	4 Nozzles	5 Nozzles	6 Nozzles
Flow Rate (1.5MPa)	6.3 L/min	8.4 L/min	10.5 L/min	12.6 L/min
Nozzle	CV2180S	CV2180S	CV2180S	CV2180S
Coverage	approx. 106cm	approx. 139cm	approx. 172cm	approx. 205cm
Maximum Spray Reach	approx. 5m	approx. 5m	approx. 5m	approx. 5m
Length/Weight	72cm, 180 g	108cm, 310 g	141cm, 390 g	174cm, 470 g
Adapter	G1/4	G1/4	G1/4	G1/4

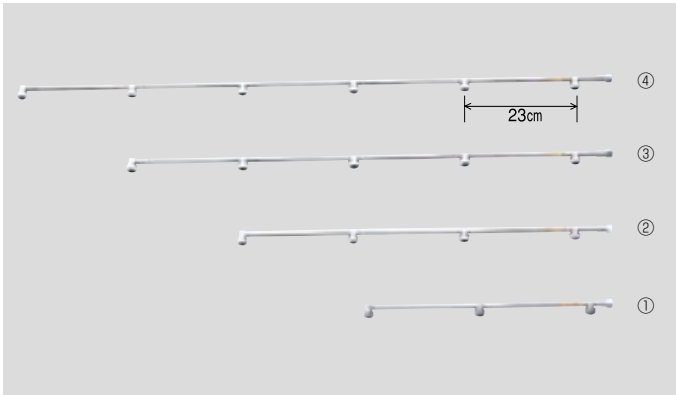
* Coverage as of 30 cm from nozzle head

No.	Code No.	Item	Min. Unit	Use
	20 13 31	CERAMIC SUZURAN Boom Sprayer, 3 Nozzles (G1/4)	10	For field vegetables (Item made on demand)
1	20 13 32	CERAMIC SUZURAN Boom Sprayer, 4 Nozzles (G1/4)	10	For field vegetables (Item made on demand)
2	20 13 33	CERAMIC SUZURAN Boom Sprayer, 5 Nozzles (G1/4)	10	For field vegetables (Item made on demand)
3	20 13 34	CERAMIC SUZURAN Boom Sprayer, 6 Nozzles (G1/4)	10	For field vegetables (Item made on demand)

CERAMIC Boom Sprayer for Tea Fields

<Drift-reducing>

Average Drop Size (μm)	120(1.5MPa)
Pressure Range (MPa)	1.0-1.5
Maximum Spray Reach	approx. 5m



Item	3 Nozzles	4 Nozzles	5 Nozzles	6 Nozzles
Flow Rate (1.5Mpa)	6.3 L/min	8.4 L/min	10.5 L/min	12.6 L/min
Nozzle	CV2180S	CV2180S	CV2180S	CV2180S
Coverage	approx. 86cm	approx. 109cm	approx. 132cm	approx. 155cm
Maximum Spray Reach	approx. 5m	approx. 5m	approx. 5m	approx. 5m
Length/Weight	52cm, 150g	78cm, 250g	101cm, 310g	124cm, 380g
Adapter	G1/4	G1/4	G1/4	G1/4

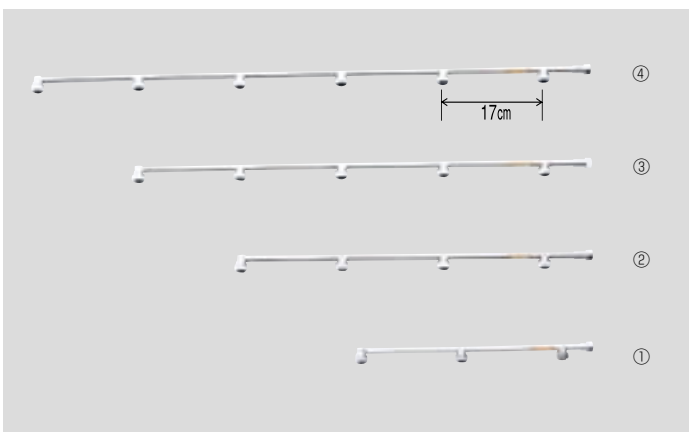
* Coverage as of 30 cm from nozzle head

No.	Code No.	Item	Min. Unit	Use
1	20 14 31	CERAMIC Boom Sprayer for Tea Fields, 3 Nozzles (G1/4)	10	For tea fields (Item made on demand)
2	20 14 32	CERAMIC Boom Sprayer for Tea Fields, 4 Nozzles (G1/4)	10	For tea fields (Item made on demand)
3	20 14 33	CERAMIC Boom Sprayer for Tea Fields, 5 Nozzles (G1/4)	10	For tea fields (Item made on demand)
4	20 14 34	CERAMIC Boom Sprayer for Tea Fields, 6 Nozzles (G1/4)	10	For tea fields (Item made on demand)
	20 14 35	CERAMIC Boom Sprayer for Tea Fields, 7 Nozzles (G1/4)	10	For tea fields (Item made on demand)
	20 14 36	CERAMIC Boom Sprayer for Tea Fields, 8 Nozzles (G1/4)	10	For tea fields (Item made on demand)

CERAMIC Boom Sprayer for Tea Fields (Dense Spray)

<Drift-reducing>

Average Drop Size (μm)	120(1.5MPa)
Pressure Range (MPa)	1.0-1.5
Maximum Spray Reach	approx. 5m



Item	3 Nozzles	4 Nozzles	5 Nozzles	6 Nozzles
Flow Rate (1.5Mpa)	6.3 L/min	8.4 L/min	10.5 L/min	12.6 L/min
Nozzle	CV2180S	CV2180S	CV2180S	CV2180S
Coverage	approx. 74cm	approx. 91cm	approx. 108cm	approx. 125cm
Maximum Spray Reach	approx. 5m	approx. 5m	approx. 5m	approx. 5m
Length/Weight	4cm, 130g	60cm, 220g	77cm, 270g	94cm, 320g
Adapter	G1/4	G1/4	G1/4	G1/4

* Coverage as of 30 cm from nozzle head

No.	Code No.	Item	Min. Unit	Use
1	20 19 31	CERAMIC Boom Sprayer for Tea Fields (Dense Spray), 3 Nozzles (G1/4)	10	For tea fields (Item made on demand)
2	20 19 32	CERAMIC Boom Sprayer for Tea Fields (Dense Spray), 4 Nozzles (G1/4)	10	For tea fields (Item made on demand)
3	20 19 33	CERAMIC Boom Sprayer for Tea Fields (Dense Spray), 5 Nozzles (G1/4)	10	For tea fields (Item made on demand)
4	20 19 34	CERAMIC Boom Sprayer for Tea Fields (Dense Spray), 6 Nozzles (G1/4)	10	For tea fields (Item made on demand)
	20 19 35	CERAMIC Boom Sprayer for Tea Fields (Dense Spray), 7 Nozzles (G1/4)	10	For tea fields (Item made on demand)
	20 19 36	CERAMIC Boom Sprayer for Tea Fields (Dense Spray), 8 Nozzles (G1/4)	10	For tea fields (Item made on demand)